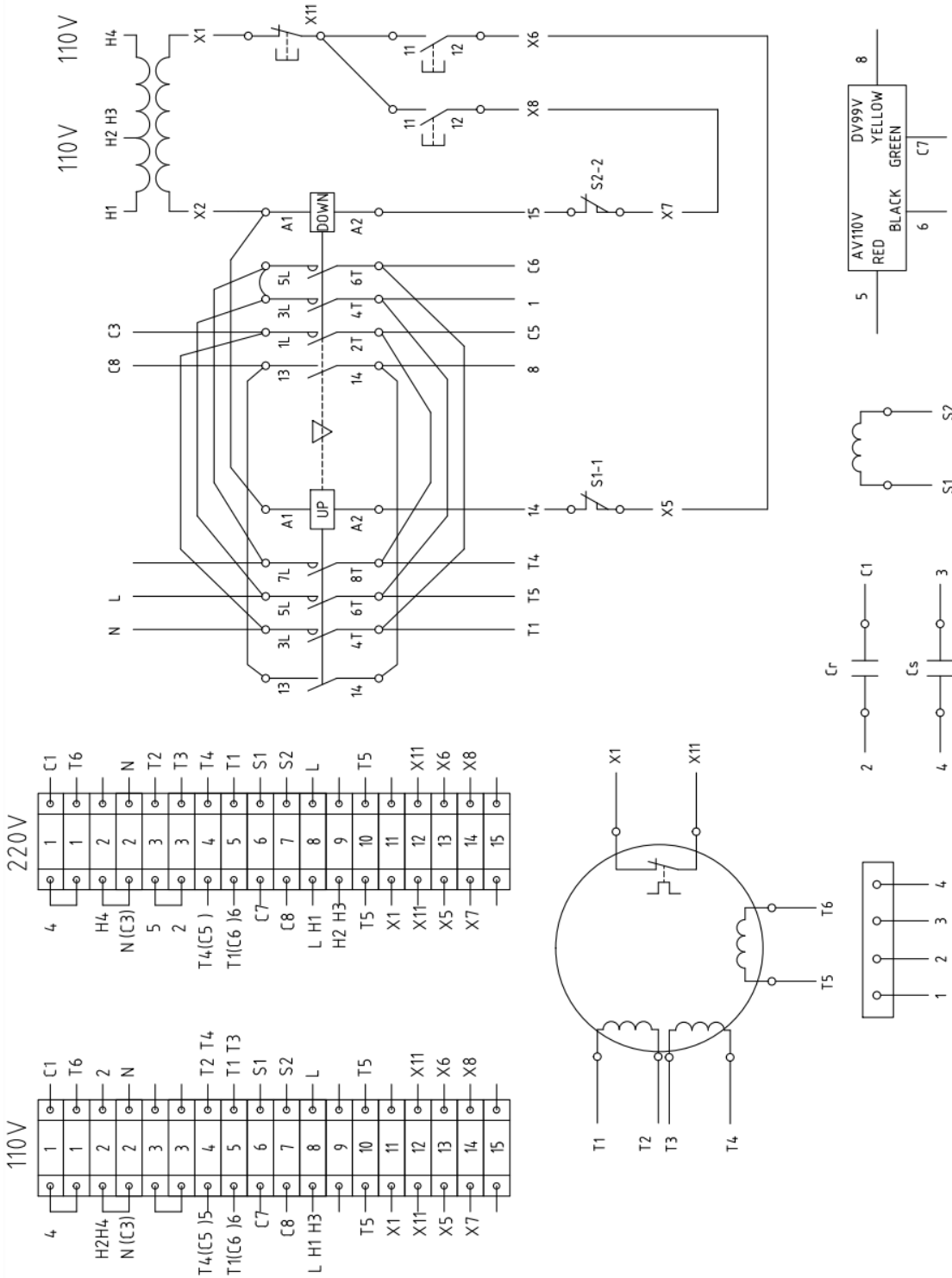




Electric Chain Hoist (Stop + Up + Down)



Wiring Instruction 115V to 230V

1. Cable H2 from Terminal 2 moves to Terminal 9
2. Cable 5 from Terminal 4 moves to Terminal 3
3. Cable T2 from Terminal 4 moves to Terminal 3
4. Cable T3 from Terminal 5 moves to Terminal 3
5. Cable 2 from T3 of the top contactor and Cable 2 from T3 of the bottom contactor must both move to Terminal 3.
6. Cable H3 from Terminal 8 moves to Terminal 9